

Welcome to

Northside
Farm



Glamping Pod

- 1 | Meet the hosts
- 2 | About the pods
- 3 | Glamping Pod Rules
- 4 | Fire Pit Rules
- 5 | Setting up the bed
- 6 | Emergency Contacts
- 7 | Transportation
- 8 | Restaurants & take aways
- 9 | Connect with us
- 10 | What to bring with you
- 11 | Evacuation information



Meet the Lockkeys

We are Olivia and Ralph Lockey, Northside Farm has been in our family for a very long time. Ralph was born and bred on the farm and has farmed the land his whole life. In 2011 Olivia and Ralph started up a diversification project to supplement farms the income. This diversification project ended up growing alongside their family and now Northside farm is a wedding and events venue, with Glamping pods and cottages.

The newest addition is our beautifully renovated farmhouse cottage, where modern comfort meets timeless charm. This spacious retreat, sleeps up to 6 people and has been thoughtfully decorated to the highest standards, offering a warm and inviting atmosphere with central heating throughout.

Whether you're here to relax or explore the surrounding nature, our Farmhouse Cottage provides the perfect blend of rustic elegance and modern amenities for a memorable stay.

We hope you enjoy your stay with us and please get in touch if you have any questions.

Olivia & Ralph



Office phone:
07904 119 327

Email address:
1 info@northsidefarm.co.uk



About the Glamping Pods

We have 10 glamping pods nestled in the orchard, each accommodating up to five guests, offering a serene countryside escape. For added entertainment, we also have a zip wire and climbing frame for children (or the big kids!).

We have four bathrooms with rainfall showers, toilet, sink, heated towel rails and hand dryers.

We also have a communal kitchen space for you to use which includes an oven, hob, drink, fridge and small chest freezer.

Amenities:

- Lighting, heating and electric points
- Fitted with a fridge, kettle, microwave
- Fire / BBQ pits
- Designated parking
- Glampers shared kitchen in stables
- Family wash room in stables
- Decking area
- Child friendly
- Pets welcome



Glamping Pod Rules

1. No smoking or vaping inside the pod.
2. No parties or large gatherings in the pod.
3. Please be respectful of other guests who maybe staying on site.
4. Please keep dogs on leads. Dogs are allowed in the pods but not in any of our cottages.
5. Please make sure children are always accompanied by an adult on the play area.
6. There is no access allowed to the stream behind the play area.
7. Please take care of the property.

You will be charged for any damage to the property, furnishings or missing belongings.



Fire Pit Do's and Don'ts



Do's:

- ☒ Each pod has an outside tap, use this to prepare a bucket of water for emergencies.
- ☒ Supervise children and pets at all times.
- ☒ Use only provided firewood or approved firewood. You can buy packs of firewood on site from our friendly staff members. If you require firewood outside of site opening hours, you can find approved firewood at Heddon-on-the-wall Garage, NE15 0BG
- ☒ Keep seating and flammable items at least one meter away.
- ☒ Fully extinguish the fire before leaving the area

Don'ts:

- ☒ Never use accelerants like petrol or lighter fluid.
- ☒ Do not leave the fire unattended.
- ☒ Do not burn plastic, cans or rubbish.
- ☒ Never move the fire pit from its fixed position
- ☒ Do not build large or high fires.



Setting up your bed

Scan the QR code below to watch a video of
how to put your bed together



Emergency Contacts

For emergencies, always call 999

Hospital:

Royal Victoria Infirmary
Queen Victoria Road, Newcastle
upon Tyne, NE1 4LP
0191 233 6161

Fire Station:

Hexham Fire Station
In an emergency , always dial
999.
None emergency - 01670
621111

Get in contact with us...

You can contact the team on 07904 119327 Monday to Friday 10:00 to 16:00 or at info@northsidefarm.co.uk. The phone is occasionally manned outside these hours however.

If it's an emergency or you need a response quickly you can call us here:

Olivia Lockey - 07539 370206
Ralph Lockey - 07734 756839

Transportation

Public Transportation

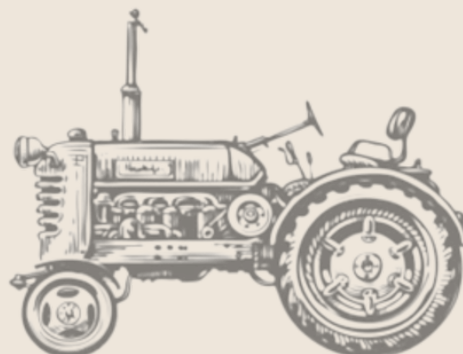
The 685 bus runs through Horsley to Hexham and Newcastle Upon Tyne. Please check the time timetable online for exact times.

Nearest Train station is at Wylam.

Taxis

Hunters - 07808 522 542

Local Taxi - 0191 462 0060 (app available)

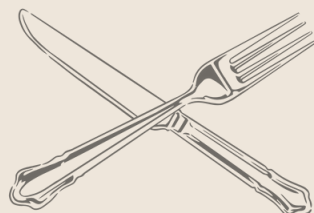


Restaurants and Pubs

- Lion & Lamb, Horsley, NE15 ONS
- Close House No.19, Heddon on the Wall, NE15 0HT
- Robin Hood Inn, Military Road, NE18 0LL

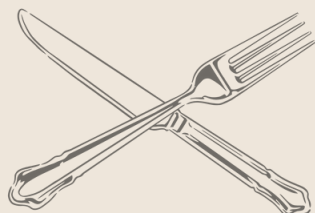
Local deliveries

- Uber Eats (app available)
- Just Eat (app available)
- The Wood Oven Pizza (Wylam) -
www.facebook.com/thewoodoven/
- Wylam Garden Chinese -
www.facebook.com/wylamsgarden

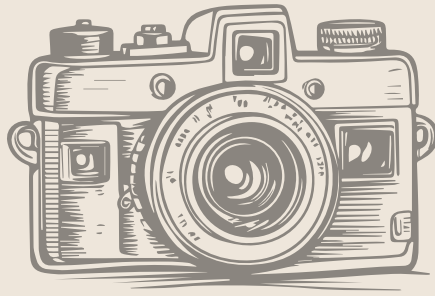


What you need to bring...

- Bedding
- Towels
- Toiletries
- Crockery & cutlery (we do have a limited amount available for you to use in the communal kitchen)
- Cooking utensils
- Torch
- Food & drink
- Kitchen roll & tin foil
- Wellies & waterproofs
- Camping chairs
- Outdoor games



Let's get social



Tag us!



@northsidefarmevents



@northsideweddings



@northsidefarmevents

Visit our website:



